



Coexistence in Metapopulations - Tutorial for EcoVirtual

In which conditions can species coexist? There are several hypotheses about this, but in this exercise we will investigate the effect of the perturbation regime that an area endures, with differences in the colonization capabilities for the species, as we are still studying the colonization and extinction processes, as described by the metapopulation models.

We will start with the [internal colonization model](#), in which a species dynamics is already familiar to you:

$$\frac{df_1}{dt} = i_1 f_1 (1 - f_1) - p_e f_1$$

Here:

- f = fraction of occupied patches
- p_e = local extinction probability
- i = increase in the colonization probability as f grows
- The rate of colonization is, then, the product if , that varies with the patch occupancy.

Now, we will add another species to the system. The second species will be a weak competitor: it will only persist in patches in which the first species is absent. This means that the patches available for colonization are only the empty patches, and that it is excluded from whichever patch is colonized by the first species. The variation of fraction of patches occupied by the second species is given by:

$$\frac{df_2}{dt} = i_2 f_2 (1 - f_1 - f_2) - i_1 f_1 f_2 - p_e f_2$$

Things you should know about this model

Interpretation

The equation for species 2 does not add any new coefficient, but only combinations of things we have already seen:

- The term $i_2 f_2 (1 - f_1 - f_2)$ indicates that the fraction of patches that can be colonized is proportional to the number of patches that are empty, from both species.
- The term $i_1 f_1 f_2$ is the expected fraction of patches occupied by species 2 that will be colonized by species 1. Thus, it represents the fraction of the patches in which species 2 will be excluded by species 1.

* The extinction rate from both species is the same, so we didn't add a subscript.

Equilibrium

The fraction of patches that are occupied by species 1 in equilibrium remains the same:

$$F_1 = 1 - p_e / i_1$$

And now the fraction of patches occupied by species 2 in equilibrium is:

$$F_2 = p_e / i_1 - i_1 / i_2$$

So, in order to have a viable metapopulation of species 2 ($F_2 > 0$), it is necessary that the following inequality is satisfied:

$$p_e / i_1 > i_1 / i_2$$


Optional: Where did this come from?

[Here](#) you can read a tutorial explaining the mathematical deduction of the fraction of patches occupied by species 2 in equilibrium, that you can run in [MAXIMA](#).

The deduction only needs simple algebraic manipulations. If you are scared of maths, keep in mind that you only need to understand the logic behind each step. To do the algebraic manipulation *per se*, there are lots of symbolic mathematics programs that can help you, such as MAXIMA, which is open source and [free to use](#))).

Download and install the program and the graphical interface [wxMaxima](#), open the script linked above and press `ctrl - R` to run.

Simulation



To proceed, you must have the R environment with the Rcmdr and Ecovirtual packages installed and loaded. If you do not have and do not know how to have them, see the [Installation page](#).

Let us run a computer simulation to generate a stochastic dynamic following the same rules as the differential model described above. The simulation is very similar to other simulation you have already seen on **EcoVirtual** :

Pseudocode

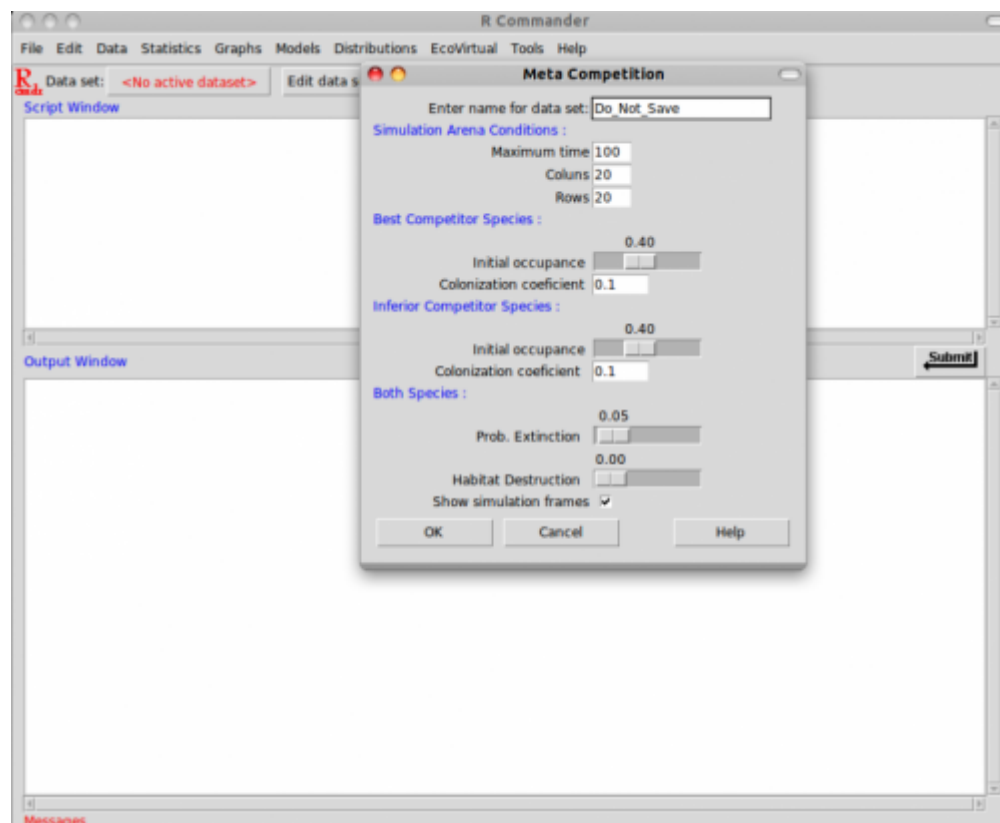
1. Define a matrix with r rows and c columns. Each cell in the matrix is a habitat patch.

2. Define the fraction of initially occupied patches (f_{i1} and f_{i2}), and occupy random patches until you reach the determined fraction.
3. Calculate the colonization probability from each species (using the product $p_i = i * f$).
4. From the occupied patches, draw a number of patches to go extinct, following the extinction probability p_e .
5. From the unoccupied patches, draws some to be occupied by species 1, according to the above probability.
6. From the unoccupied patches, draws some to be occupied by species 2, according to the above probability. If the selected patch is already occupied from species 1, the colonization fails and nothing happens.
7. Counts the number of occupied patches from each species to determine the fractions of occupancy,
8. Repeat from step 3 until the desired number of iterations is reached.

The arguments to this function are the number of rows and columns for the habitat matrix, the number of time intervals that should be run, initial fraction of patches occupied by each species, and the model parameters i_1 , i_2 and p_e .

Metapopulation competition in EcoVirtual

To run the simulation tutorial, just open the **Meta Competition** window, under the menu **EcoVirtual>Two species> Meta Competition...** . The following window will open:



The parameters here are almost the same as the internal colonization model, but adding a second species:

option	parameter	effect
data set	R object	stores the simulation results
Maximum time	\$\$tmax \$\$	number of model iterations to be run
columns	\$\$cl\$\$	number of columns in the habitat
rows	\$\$rw\$\$	number of rows in the habitat
Best Competitor	Parameters for the best competitor	
initial occupancy	\$\$f01 \$\$	p proportion of initial patch occupancy by species 1
colonization coef.	\$\$i1\$\$	c colonization coefficient for sp1
Inferior Competitor	Parameters for the inferior competitor	
initial occupancy	\$\$f02 \$\$	proportion of initial patch occupancy by species 2
colonization coef.	\$\$i2\$\$	colonization coefficient for sp2
Both Species	Parameters shared by both species	
prob. extinction	\$\$pe\$\$	extinction probability
Habitat Destruction	\$\$D\$\$	proportion of patches not available
Show simulation frames	<i>anima=TRUE</i>	should every step be graphically animated?

What is the secret of coexistence?



Start a simulation with the following parameters:

```
tmax = 100
cl = 20
rw = 20,
f01 = 0.1
f02 = 0.4
i1 = 0.4
i2 = 0.5
pe = 0.25
```

Calculate the equilibrium value for each species using the formulas shown above. Verify that the theoretical values are close to the simulations results.

Competition vs. Colonization balance



Don't be destructive!

The parameter **D** in the model controls how much habitat is removed at the start of each simulation. Don't use your immense destructive powers by now, as this will be done on the next tutorial. For now, always leave this parameter as *zero*.

We have defined the species 2 as the worse competitor. Does this sentence it to extinction? Examine the effect of the difference between the colonization capabilities over coexistence. To do this, we will vary the colonization parameter for species 2, keeping everything else constant. Identify the conditions for coexistence, and for extinction of each species.

Start simulating the following parameters:

```
tmax = 100
cl = 20
rw = 20
f01 = 0.05
f02 = 0.05
i1 = 0.1
i2 = 0.1
pe = 0.05
```

Now keep everything unchanged, except for i_2 . Change i_2 to:

1. from 0.2 to 1 with step 0.1
2. 10
3. 100

What is the interpretation of these results?



- The condition for persistence of species 2 is given by an inequality involving the ratio i_1/i_2 , which expresses the difference in colonization capability between the species. See the formulas in the section [Equilibrium](#)

Extinction regime

Let's start a new simulation with a new combination of parameters, in which species 2 has triple the colonization capability as species 1:

```
tmax = 100,
cl = 20,
rw = 20,
f01 = 0.1,
f02 = 0.1,
i1 = 0.1,
i2 = 0.3,
```

$pe = 0.05$

Does this simulation lead to extinction? Vary the extinction probability keeping the other parameters constant, to investigate the effect of the perturbation regime over the results.

1. Increase pe to 0.07
2. Vary the pe from 0.08 to 0.14, with step 0.02

If the equilibrium is not being reached:

Tips

Many times, in order to check the predictions of a stochastic models, we need to run the simulation for longer times. When the graphical animation is toggled, it can take a while to process. In order to shorten the required time, turn off the animation by deselecting "*Show simulation frames*". (anima=FALSE).

Initial proportion of occupied patches

Patch occupancy can be defined as the proportion of available patches that are being occupied by a species. In our model, the initial occupancy for each species is given by $fi1$ and $fi2$.

1. Run some simulation to check if these parameters affect the long term behavior of the populations
2. Are the trajectories different for different initial occupancies? Does it change the coexistence?

Questions

1. Which attributes of the inferior competitor enable the coexistence with the superior competitor? What is the biological interpretation for this?
2. What is the relationship between coexistence and local extinction in this model? Think about the theoretical and applied consequences.
3. What is the effect that species 2 has over species 1 in this model? What is the most straightforward simulation to show this clearly?
4. What is the equilibrium occupancy for species 2 when species 1 is absent from the whole landscape?

To learn more

- [Hastings, A. \(1980\)](#) Disturbance, coexistence, history and competition for space. *Theoretical Population Biology*, 18:363-373.

- Stevens, M.H.H. (2009) A primer in ecology with R. New York, Springer.

[RCMDR](#), [multipopulações](#), [metapopulações](#), [competição](#)

From:

<http://ecovirtual.ib.usp.br/> -

Permanent link:

http://ecovirtual.ib.usp.br/doku.php?id=en:ecovirt:roteiro:metap_duas:metap_coexrcmdr 

Last update: **2017/10/17 11:42**