



Population dynamics with density dependence - Tutorial in EcoVirtual



The population growth model with constant growth rate may leave the impression that its predictions are useless. As a matter of fact, we never see in nature a population that exhibits an exponential growth for very long. The [tutorials for these models](#) show that bacteria, for example, can grow in an exponential manner for some time, until...

This limitation of the exponential growth (i.e., the “until...”) is related to the model assumptions. In this cases, the assumption that ***the conditions and resources that each individual experiences are constant in time.***

This assumption is very unrealistic - but not more unrealistic than the assumptions of the [Newton's law of inertia](#). In nature, there are no bodies that keep moving in a stable motion with the same speed and direction forever. Anyway, this law helps us to understand our world, and together with Newton's other laws it helps us predict the trajectories of planets with a reasonable precision.

In the same way that a miniature car stops moving some time after being propelled because of attrition (between its own pieces, and between the wheels and the ground), a population slows down its growth until it stops. That happens due to several factors, even if it has a theoretical potential to keep on growing in exponential fashion.

Density effects

A change in the density of a population can have effects on the vital rates of the individuals. For example, in social animals for which cooperation increases survival, an increase in density may increase the survival probability ([Allee effect](#)).



The marmots (those cute little rodents!) live in groups where there are guards to alert about the

present of predators (birds of prey - which are less cute). These guard shifts reduce the *per capita* predation in the population. The positive effects of density in a population, although seem to be very evolutionarily beneficial, have evolved in few linages of organisms¹⁾.

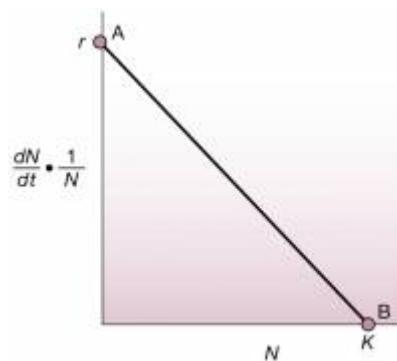
On the other hand, the negative effects of density dependence are universal. Even for those species that present cooperation, at some point in increasing density, the negative effects overrides the positive.



Why are the negative effects of density so widespread? A simple reason: to exist means to occupy a space. Space is a finite resource - even if renewable - and two bodies may not occupy the same space²⁾. Another simple reason: the individuals from a same population need "exactly" the same resources. Even if the resources are abundant, if the population grows too much, it will become limiting. We call these kind of interaction between individuals from a population *intra-specific competition*³⁾, the simplest form of population size self-regulation.

The logistic model

A simple way to think about the density effect in a population is to make the population growth and the population size to have a negative linear relation. We only need to take care to see that we're modeling each individual (*per capita*) effect in the population growth rate. See the following graph:



This graph depicts the contribution of each individual ($\frac{1}{N}$) to the growth rate of the entire population $\frac{dN}{dt}$ as a function of the total number of individuals (N). The maximum growth rate is r ⁴⁾ and the maximum size of the population is K : the support capacity.

We can write down the equation for this first-order function, $y = a + bx$, where a is the intercept and b the inclination coefficient:

$$\frac{dN}{dt} \frac{1}{N} = r - \frac{r}{K} N$$

With a little bit of algebra...

$$\frac{dN}{dt} \frac{1}{N} = r \left(1 - \frac{N}{K}\right)$$

$$\frac{dN}{dt} = rN \left(1 - \frac{N}{K}\right)$$

We can interpret this equation in the following way: the growth speed, dN/dt , grows near an exponential rN when N is small - because the expression $\left(1 - \frac{N}{K}\right)$ is near unity. On the other hand, when the population size gets near the support capacity K , the expression $\left(1 - \frac{N}{K}\right)$ tends to zero, and so does the growth speed. We can think of the expression $\left(1 - \frac{N}{K}\right)$ as the **unused portion of the support capacity**.

There is an analytical solution for the equation above, that can be expressed as a population size as a function of time⁵. It can be written as:

$$N_t = \frac{K}{1 + \left(\frac{K - N_0}{N_0}\right)e^{-rt}}$$

What is the take-home message?!

The most important thing to notice in our model is the linear dependence of density. The biological interpretation is way easier in the differential equation formulation $\frac{dN}{dt} = rN \left(1 - \frac{N}{K}\right)$.

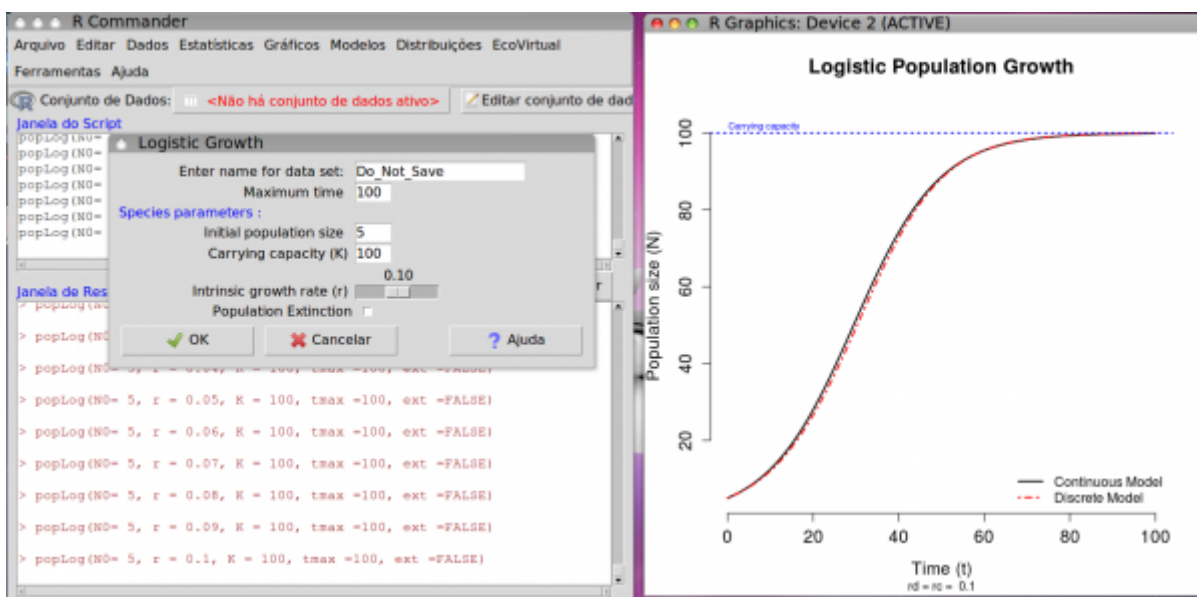
It's also important to know that this differential equation has an analytical solution, which allows us to figure out easily the population size for each value of time.

Simulating the logistic model

To proceed, you must have the R environment with the Rcmdr and Ecovirtual packages installed and loaded. If you do not have and do not know how to have them, see the [Installation page](#).

Let's now use **EcoVirtual** to simulate different populations with density dependence and try to interpret their possible biological meaning.

On the **EcoVirtual** menu, open the window *Logistic Growth*, from the *One Population* menu:



The parameters of the function are:

Option	parameter
maximum time	tmax
Initial population size	N0
Carrying capacity	K
intrinsic growth rate	r
population extinction	ext=TRUE

Questions

1. The logistic curve is often referred to as **S-shaped**. Does the graph on the window have this shape? Change the parameters and try to find the hidden S shape. Which parameter makes the S more evident? Why?
2. Make simulations to confirm the following statement: *“the final population is the same, independently of the initial condition (\$N_0\$)”*. Use $r=0.05$ and $K=100$, and values for N_0 below and above the carrying capacity.
3. Make simulations to confirm the following statement: *“when a population is disturbed from its equilibrium, it takes longer to stabilize if its number is increased than if its number is decreased”*. Run your simulations for r values between 0.01 and 1.0 and $K=100$.

Discrete time models

The graph from **EcoVirtual** shows two logistic models which are executed with the same parameters: (1) continuous time and (2) discrete time. Although the continuous model's growth rate is an instantaneous rate (r_c) while the discrete model's is a rate of individuals by time interval⁶⁾, the models are, up a certain point, equivalent. The discrete coefficient r_d can be written as:

$$r_d = \lambda - 1$$

with: $\lambda = \frac{N_{t+1}}{N_t}$

Damped oscillations

The discrete time model has a very distinct behavior for very high population growth rates. Let's slowly increase this parameter and see:

- simulate populations with growth rates ranging from 1.0 up to 1.8 and describe the difference between the discrete and continuous time simulations.
- change the maximum time to 10^7 and propose an explanation for the discrete time model.

Limit cycles and...

What happens with the discrete model projections if we increase the growth rate even more? Simulate populations with rates equal to 2.2 and 2.5 and see for yourself. Use long maximum times to see whether the population stabilizes, and shorter times to see what's happening on a better resolution.

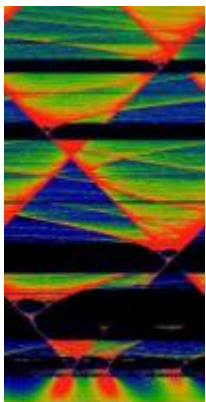
Questions

- Is there a regularity for this values of growth rate?
- What is the difference between the models?

Now simulate a population for growth rate of 2.9 and answer:

- Is there any regularity in this projection?
- Is the trajectory reversible?
- Do changes in the population initial size affect the trajectory?

Bifurcation map



Apparently simple non-linear functions may exhibit this unusual behavior of generating unpredictable patterns. Actually, there is a lot of regularity in the seeming disorder of these functions. One constant that was described in this disorder is the ratio between the interval up to a bifurcation and the interval to the next bifurcation⁸⁾. Few people expected that, 25 centuries after Pythagoras described the constant π , a new universal constant could be discovered.

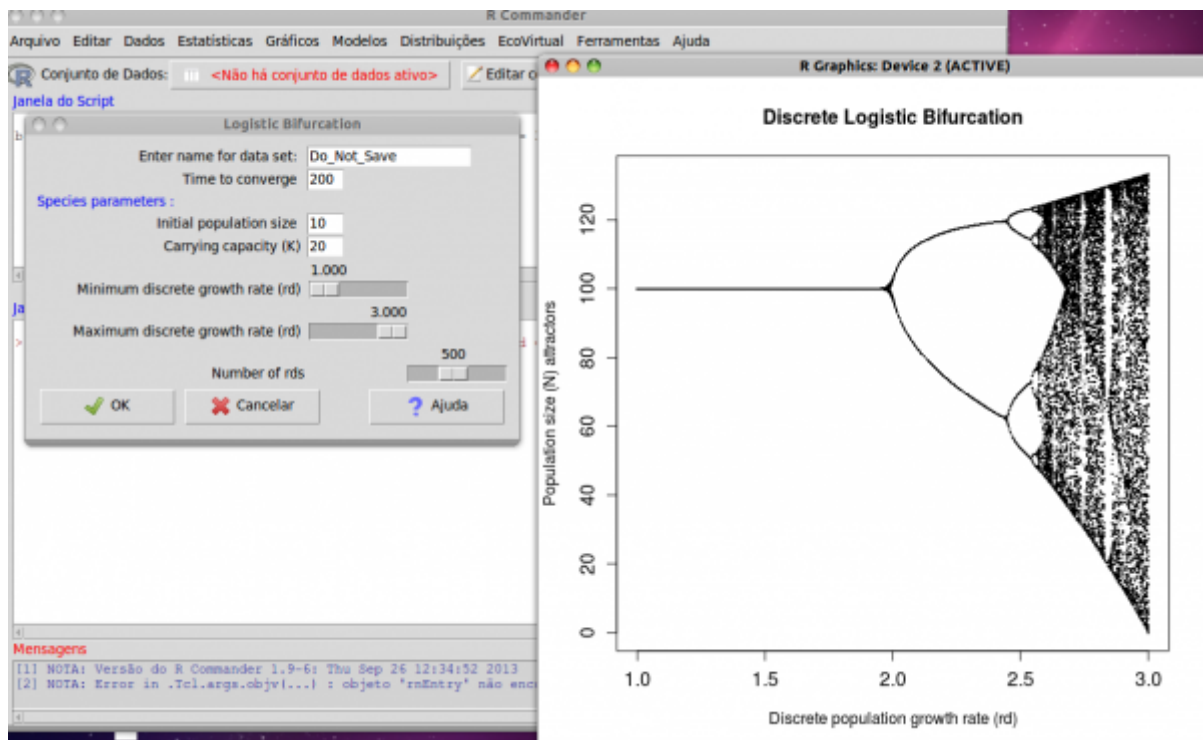
One way to see the behavior of these populations as we change the **discrete growth rate** r_d is by plotting a logistic bifurcation plot. The proposal is to map the stability points (attractors) of the population growth. To do this, we need to simulate populations with several values for r_d for some time and store the values for which there's convergence. However, we need to let these simulations

run for a while to make sure that, if there is a convergence point, it has been reached.

The function **bifAttr*** of the EcoVirtual package does this. Its parameters are:

Option	parameter
Time to convergence	tmax
Initial population size	N0
Carrying capacity	K
Minimum discrete growth rate (rd)	minrd
Maximum discrete growth rate (rd)	maxrd
Number of rds	nrd

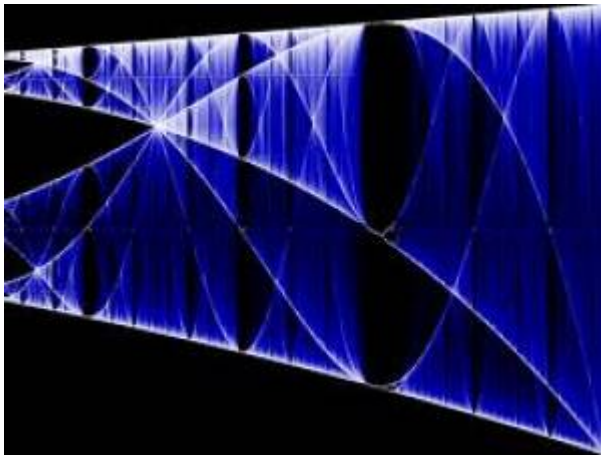
Let's see this map, using the default values for the function! On the EcoVirtual menu, open the Logistic Bifurcation, on the One Population menu, and click OK**. The following graph should appear:



Atividade

- identifique os padrões de bifurcação;
- varie os parâmetros K e N_0 e veja se há modificação no padrão geral do mapa de bifurcação. O que isso significa?

Patterns inside chaos



Another pattern that we can observe is that chaos windows are intercalated with limit cycles. One more pattern: in the limit cycle windows, there's a modification on the bifurcation rule: it starts on a stable point (r_0), then starts on 3, 5, 7, 9... and each prime number. That is, the start of the regular period cycles and bifurcation starts with every prime number. Another fascinating pattern is that the patterns repeat on different scales, like fractal dimension objects.

Questions

- where are the starting points of the limit cycle windows with different periods (3, 5, 7...)?
- show the pattern repetition at different scales.

Use small intervals of r , by changing `minrd` and `maxrd`, and look where there are gaps in the bifurcation map.

Exercises

- Assume that one population of butterflies is growing according to the logistic model. If the carrying capacity of an area is 500 butterflies and $r = 0.1$ individuals / (individual * month), what is the maximum possible growth rate for this population?
- Attempting to maximize the fishing yields, a fisheries biologist is trying to keep a stable population of lake trout at 500 individuals. Assuming that the r for the trout is 0.005 individuals / (individual * month), and predict what is the population growth if the population stays at 500 individuals, and what is the population growth if the population is increased in 600 additional individuals.
- Demonstrate that the decline of a population above its carrying capacity is always faster than the corresponding growth for a population below the carrying capacity. Why is it so? (Tip: represent the initial population above or under the carrying capacity as $k \pm x$ individuals)

To learn more

- Gotelli, N. J. 2007. **Ecologia**. Planta, Londrina. *O capítulo 2 é uma introdução muito didática aos modelos de crescimento com dependência da densidade.*
- Fernandez, F. 2000. Capítulo 5 - Da Falsa Questão de Elton a um mundo novo. In: O Poema Imperfeito. Crônicas de Biologia, Conservação da Natureza e seus Heróis. Editora UFPR, Curitiba. [pdf](#)
- Sherratt T. & David M. Wilkinson. 2009. Capítulo 6 - Is Nature Chaotic? In: Big Questions in Ecology and Evolution. Oxford University Press, USA. [pdf](#)
- May, R. M. 1976. Simple mathematical models with very complicated dynamics. [Nature 261: 459-467](#). *O artigo clássico em que Robert May demonstrou que modelos muito simples de dinâmica populacional podem exibir comportamento caótico.*
- Population dynamics from first principles. Capítulo 2 de **Complex Population Dynamics**. Peter Turchin, Princeton Univ Press, 2003. *Este texto instigante apresenta os modelos clássicos de crescimento populacional como leis análogas às da Física. Uma abordagem muito original dos modelos e sua importância para a teoria ecológica.*
- Edwards, W. J. & Edwards, C. T. 2011. Population Limiting Factors. [Nature Education Knowledge 3\(10\):1](#). *Introdução ao conceito de fatores limitantes dependentes e independentes da densidade.*
- Vandermeer, J. 2010. How Populations Grow: The Exponential and Logistic Equations. [Nature Education Knowledge 3\(10\):15](#). *Outro texto muito didático, com considerações sobre as consequências ambientais do crescimento populacional humano.*
- [Introduction to dynamic systems and chaos](#), excelente curso *online* do site [Complexity Explorer](#).

RCmdr, uma população, crescimento logístico, tempo discreto, tempo contínuo, atrator

1)

that's a mystery to be unveiled: why is cooperation so rare, if it increases the individual fitness so much?

2)

out of the subway trains, that is

3)

see more here: [http://en.wikipedia.org/wiki/Competition_\(biology\)](http://en.wikipedia.org/wiki/Competition_(biology))

4)

population intrinsic growth rate

5)

challenge: check that this solution is right using [Maxima](#)

6)

generation time

7)

to have a better resolution

8)

http://en.wikipedia.org/wiki/Feigenbaum_constants

From:

<http://ecovirtual.ib.usp.br/> -

Permanent link:

http://ecovirtual.ib.usp.br/doku.php?id=en:ecovirt:roteiro:den_dep:den_deprcmdr



Last update: **2017/09/12 17:27**